

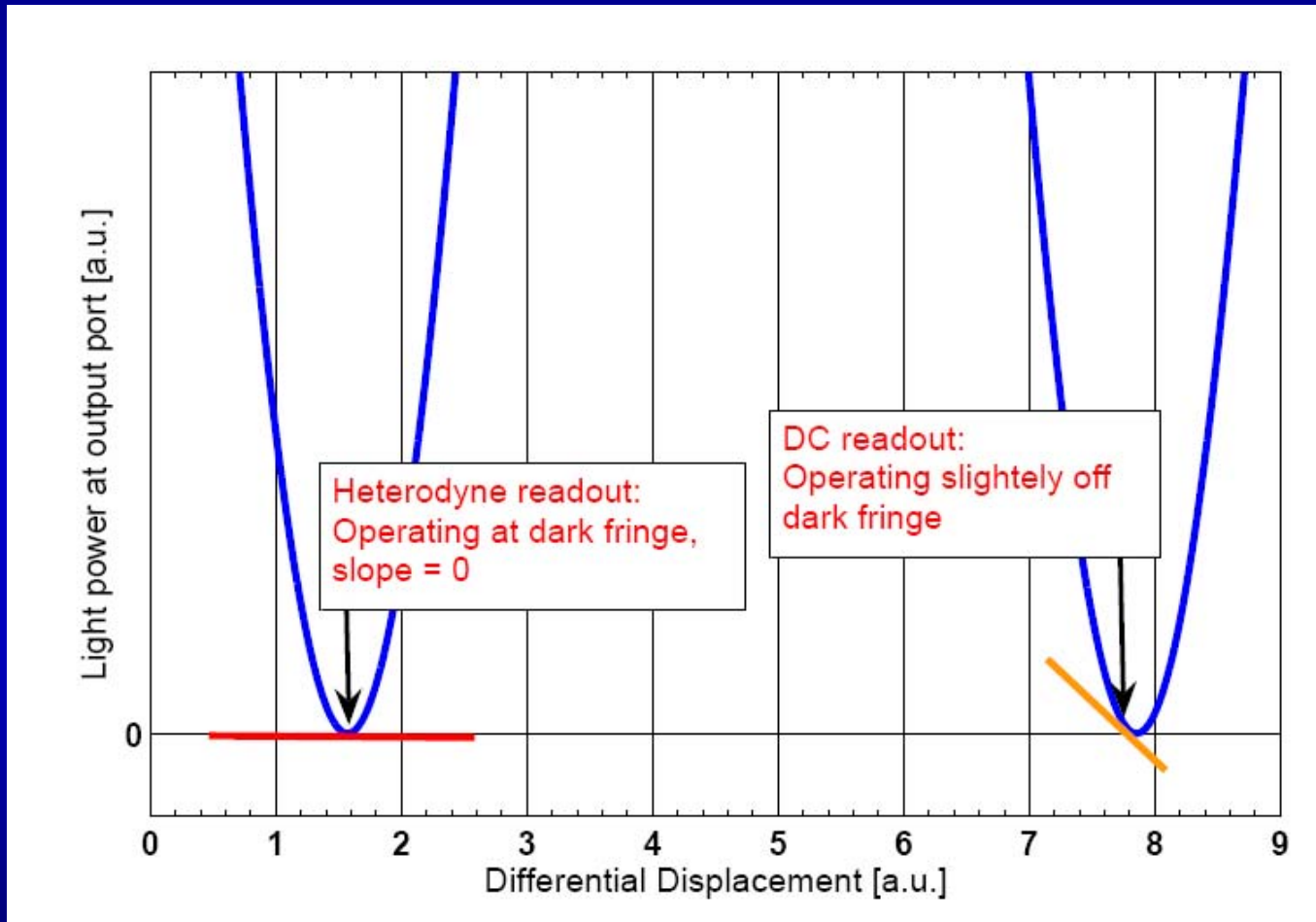
Simulations towards DC Readout for GEO

Stefan Hild for the GEO-team



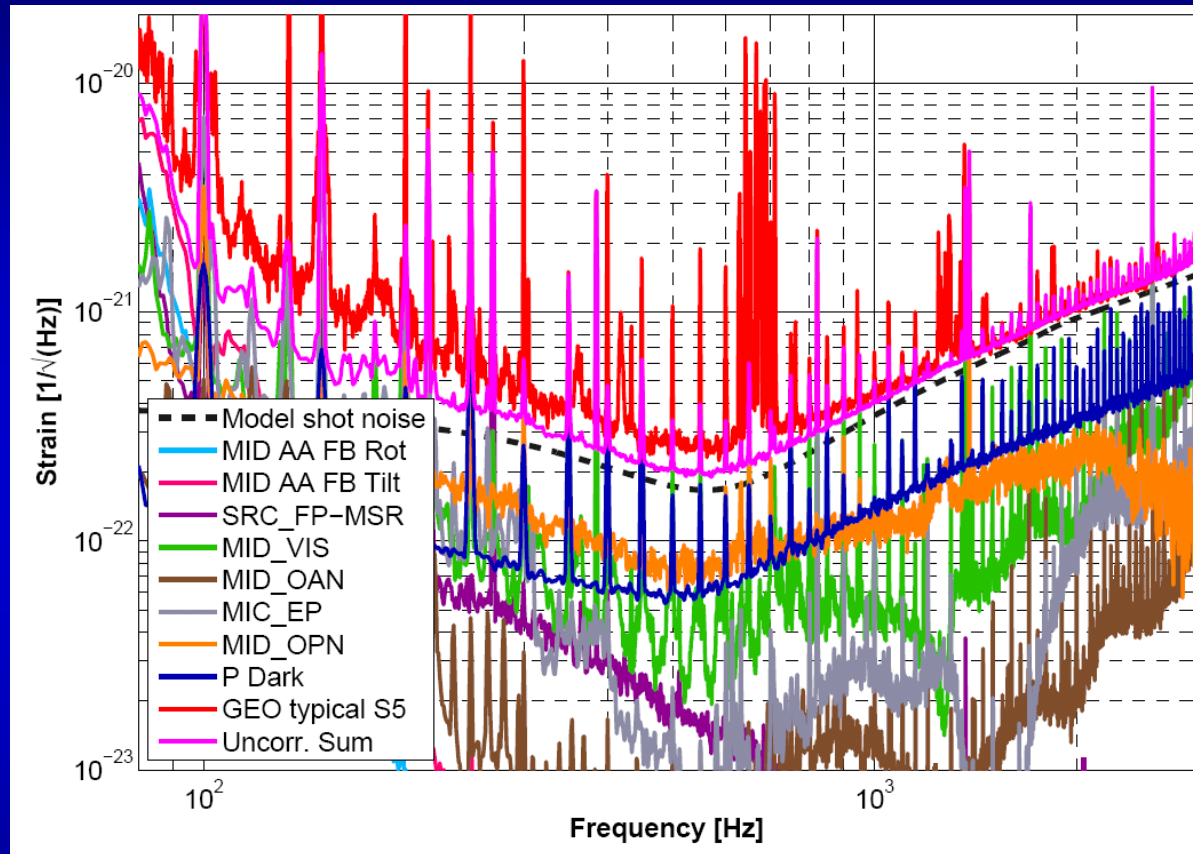


Heterodyne vs DC-readout





Motivation: win at high frequencies



Limits at high frequencies:

- shot noise
- darknoise of main photodiode (+mixer)
- oscillator phase noise



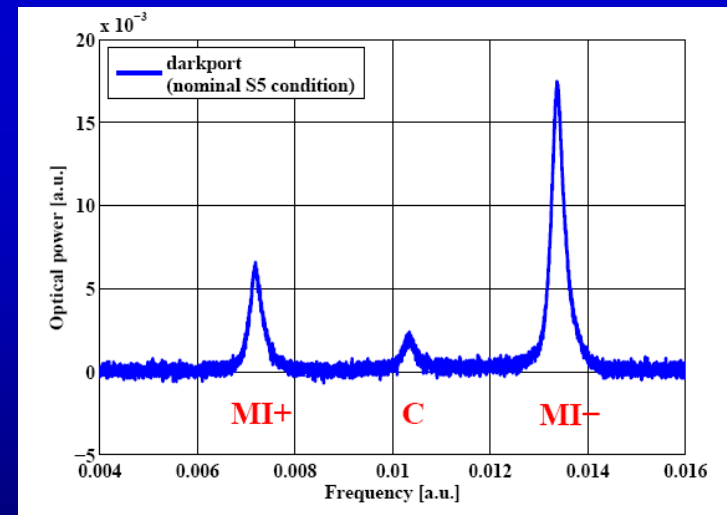
Shot noise improvement from DC_readout

[Buonanno03] "Quantum noise in laser-interferometer gravitational-wave detectors with a heterodyne readout scheme", A Buonanno, Y Chen, and N Mavalvala, Phys. Rev. D 67, 122005, (2003)

[Harms06] "Shot Noise and Heterodyne Detectors", J Harms, internal document, 2006

When going to DC-readout the signal to shotnoise ratio will be increased by a factor between $\sqrt{1.5}$ for balanced sidebands and $\sqrt{2}$ for completely unbalanced sidebands.

Measurements of the dark port light field of GEO (TEM00) using a scanning Fabry-Perot cavity.



We expect an increase roughly in the middle between balanced and unbalanced.

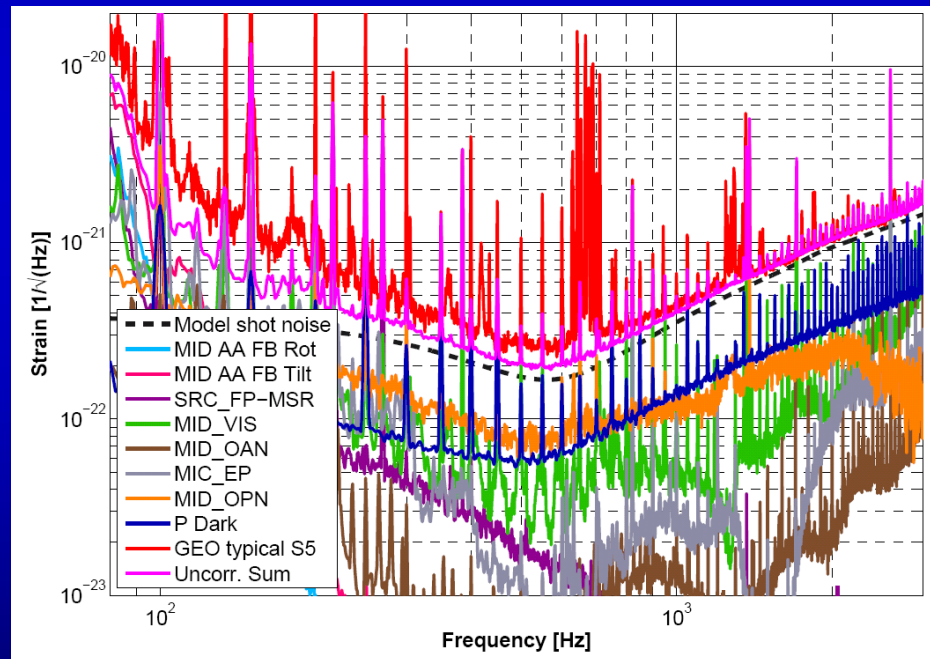


Dark noise

Requirements for the main photodiode:

- high dynamical range
- capable of RF signals

Limited by electronic noise of the photocurrent2voltage stage and the first amplifying OP.

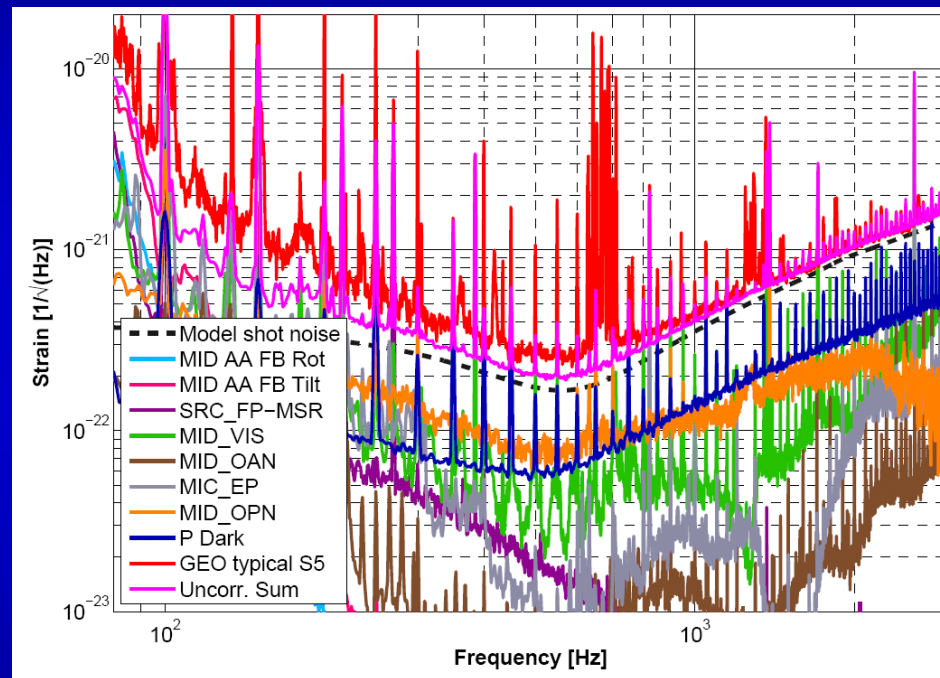


Will be gone when only DC signals have to be detected.



Oscillator phase noise

Usually considered as technical noise. However at the current sensitivity levels it is a serious problem.



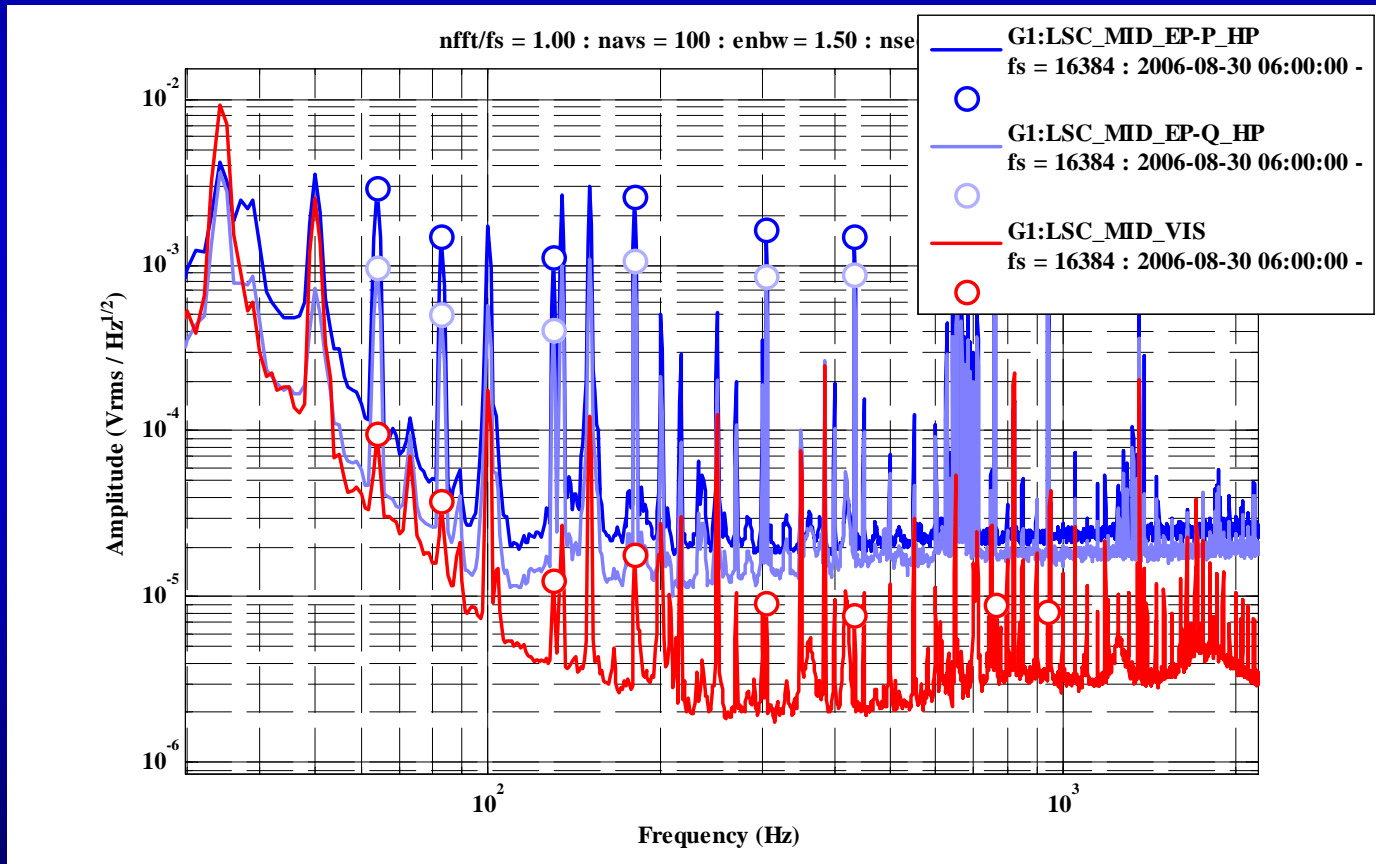
Will be gone when going to DC_readout !! ☺

It is a noteworthy fact, that in recent times the relative stability of the light in the interferometer is better than the relative phase noise achievable with excellent RF technique.



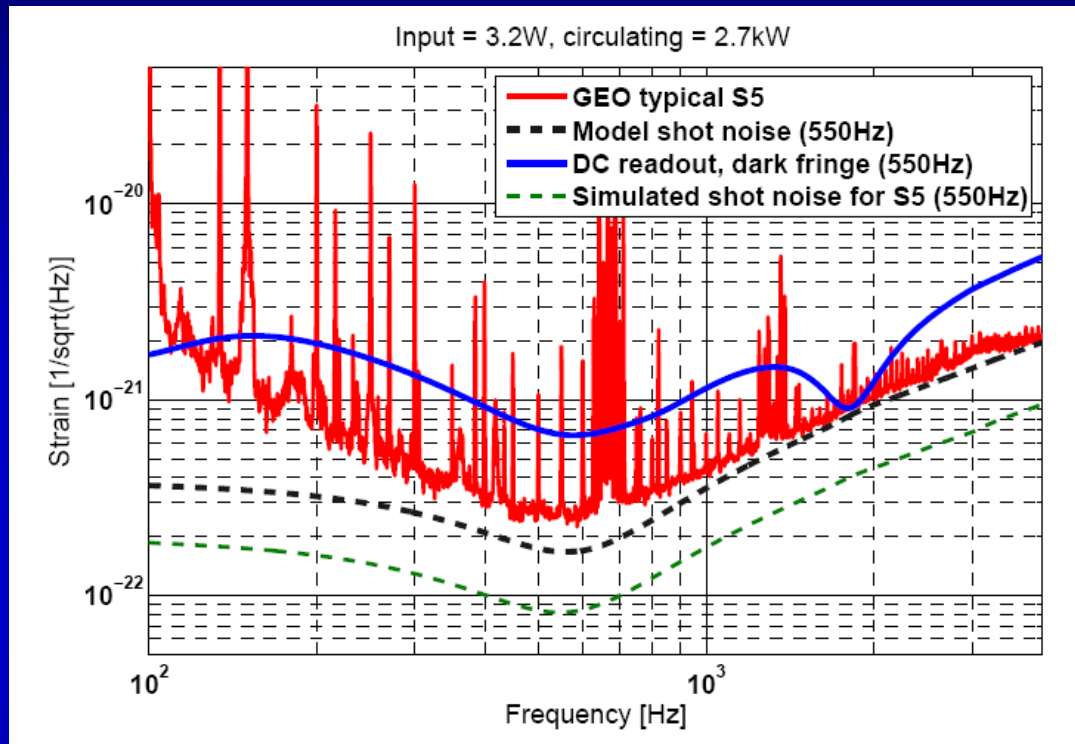
First step towards DC-readout (1)

We see already the MI differential calibration lines in the DC power at the dark port (10 times less sensitive than the GW channel)





Simulated Shotnoise for S5, homo vs hetero



DC readout, dark fringe = no dark fringe offset, mindex = S5 nominal

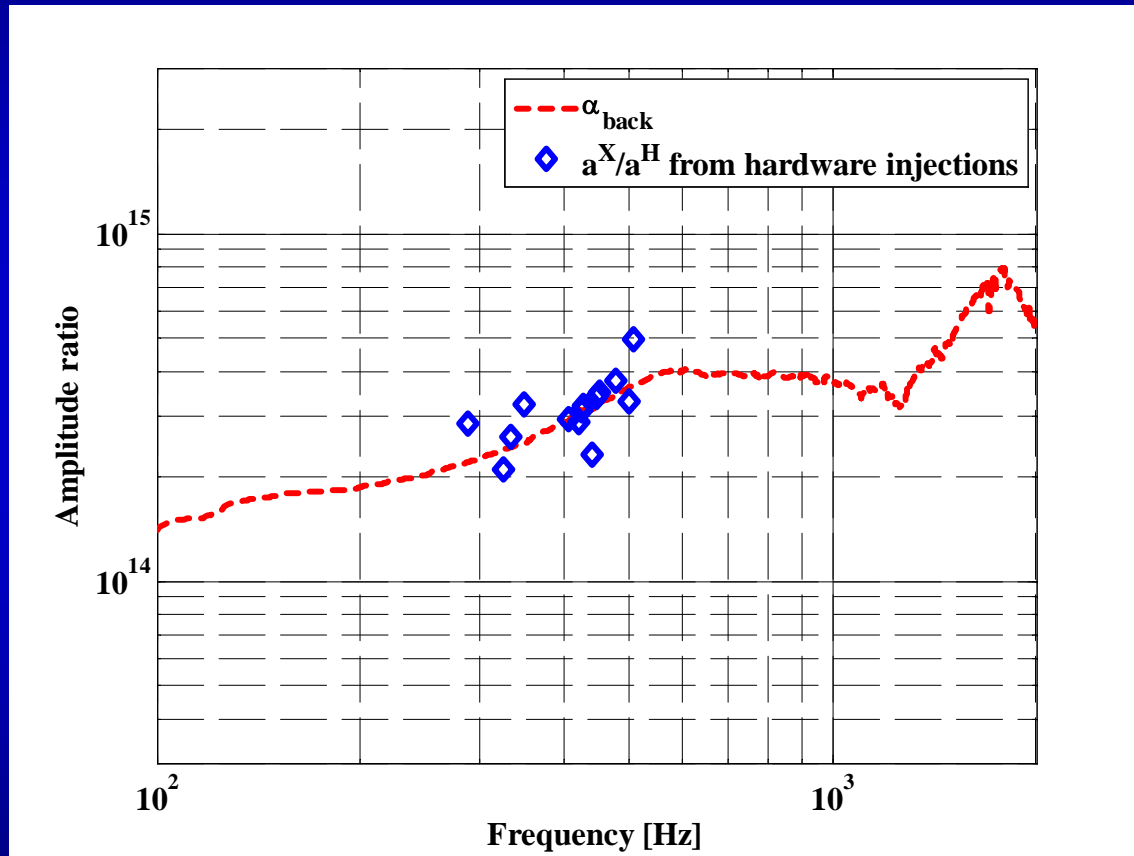
Simulated shot noise
for S5 (550Hz)

The shot noise for the heterodyne readout was estimated by using the *pdS2*-command of FINESSE. The outcome of the FINESSE simulation was then multiplied by two correction factors: First a factor $1/\sqrt{2}$, accounting for the different propagation of signal and shot noise in a FINESSE-mixer (for a detailed description see [Finesse], page 61). The second factor, $\sqrt{2}$, accounts for additional shot noise in a heterodyne readout with respect to a homodyne readout [Buonanno03], [Harms06].



First step towards DC-readout (2)

Measurement of the amplitude ratio of GW-like events in H and MID_VIS.



Around 1.8 kHz MID_VIS is especially sensitive to GW-like signals.



First step towards DC-readout (2)

1st IDEA

demonstration gain sensitivity at high frequency (few kHz):

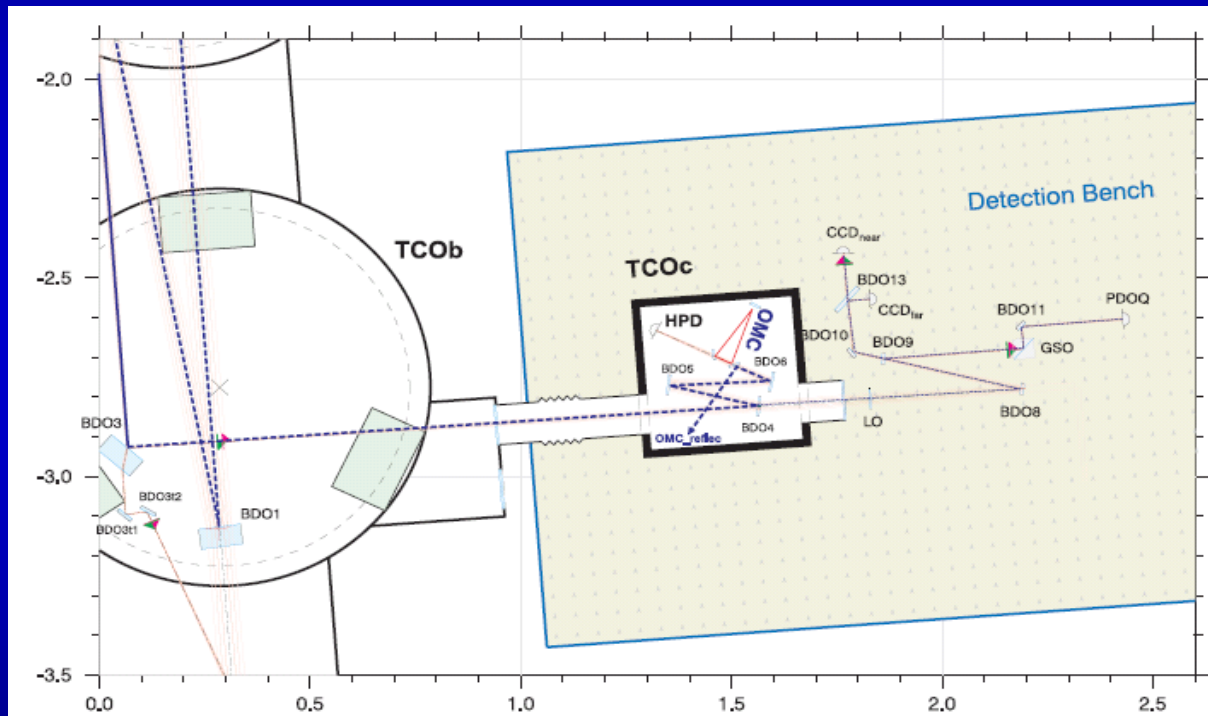
- Leave the detector control mainly as it is at the moment (still use Schnupp modulation and use error signals derived from RF). (MI_long + MI_AA from MI_quad_PD)
- Introduce an offset from dark fringe.
- Add a output mode cleaner in air in the HPD path (aiming for reducing the MI sidebands by a factor of 10 = pole at 1.5MHz).
- That will give poor sensitivity at low frequencies, but there is a chance to confirm the gain in sensitivity at high frequencies.



Optical Layout of the GEO detection bench

Currently:

- PDOQ used for MID_AA + MID_long lock (acquisition)
- HPD used for MID_long lock in final config.+ readout in final config.

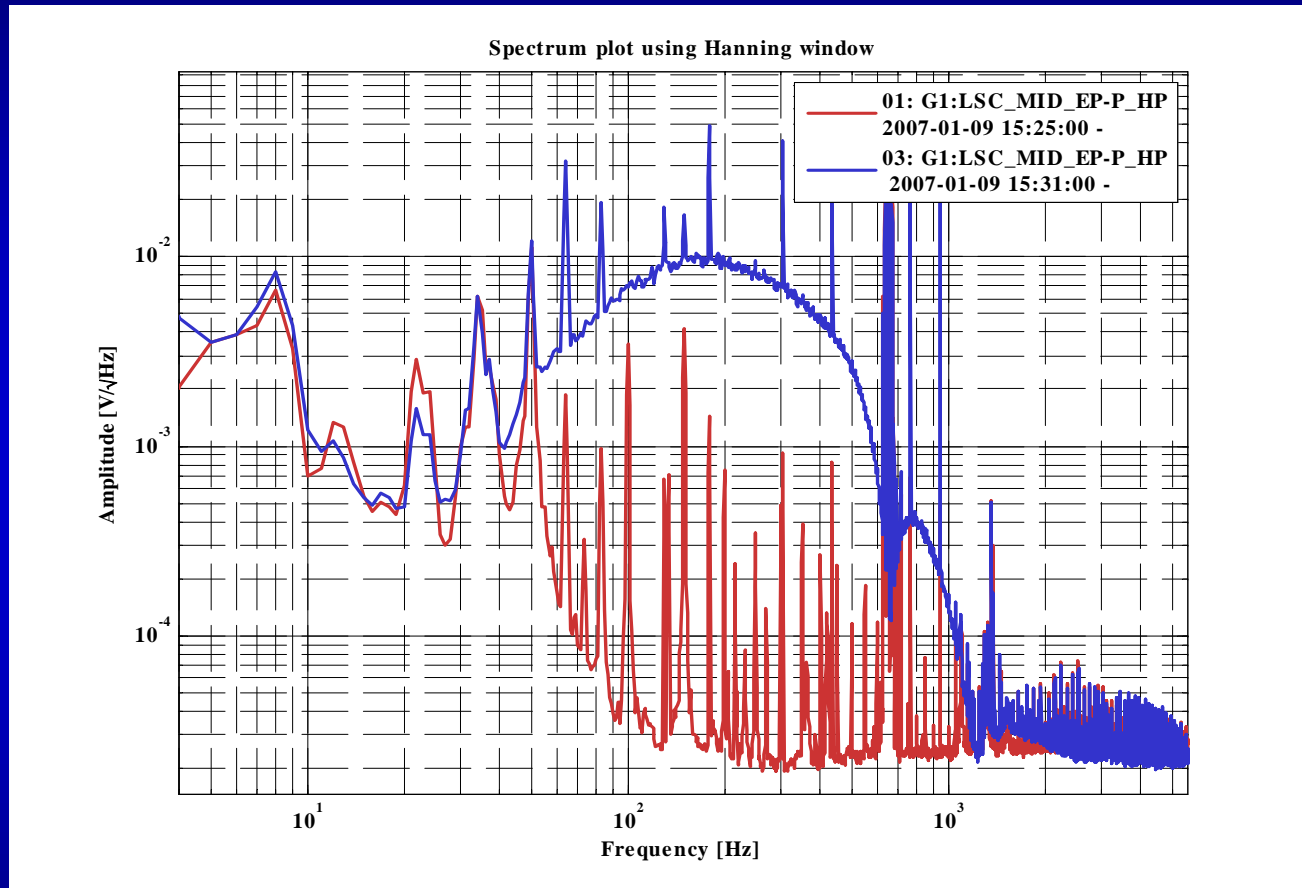


DC-readout

- PDOQ used for MID_AA + MID_long lock (acquisition + final)
- HPD used for MID_long readout in final config.



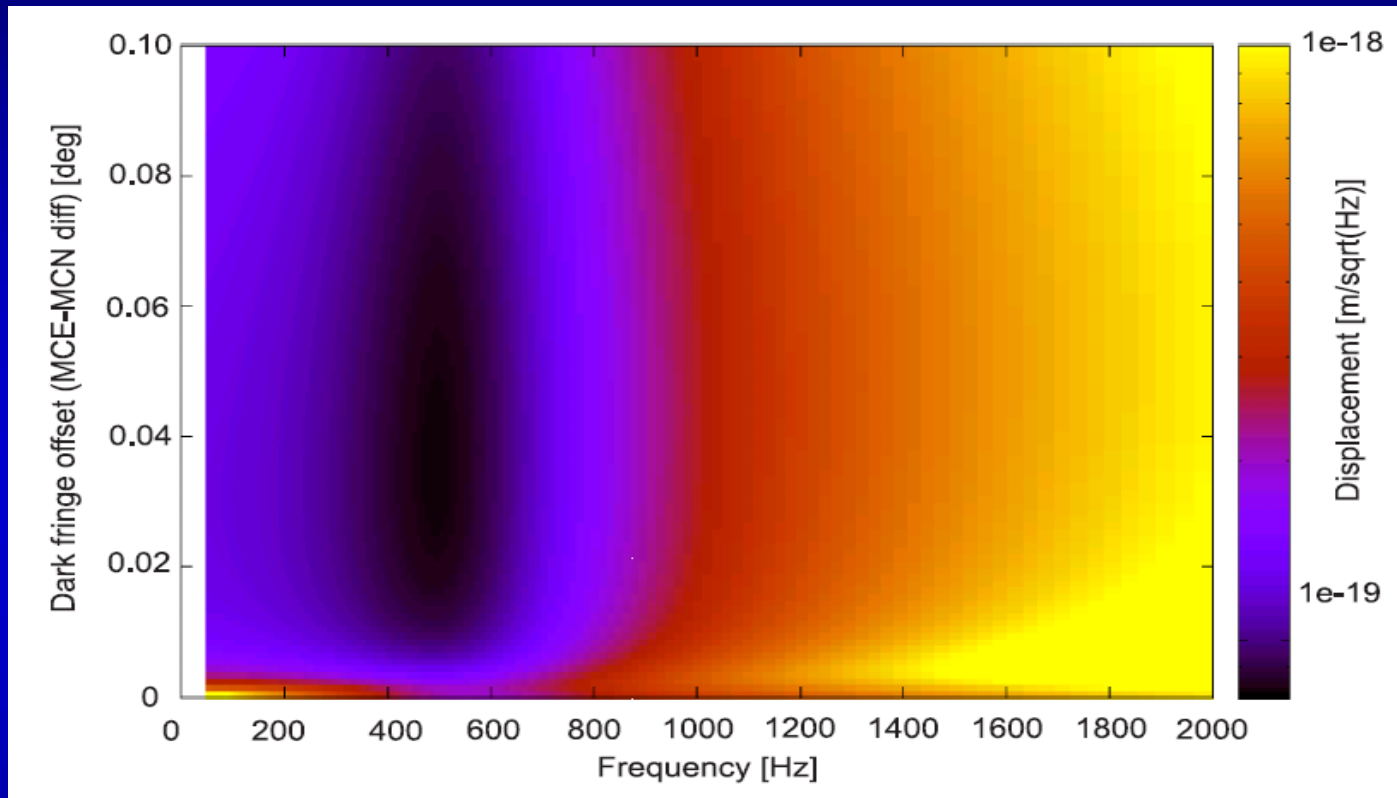
Current noise performance



PDOQ used for locking signal. Readout with HPD.

Above 1.5 kHz roughly the same sensitivity is achieved (can probably be further improved)

Determine the optimal dark fringe offset



Optimal offset: 0.036 deg (diff) \Rightarrow 104 pm

Nearly optimal already: 0.018 deg (diff) \Rightarrow 52 pm

$$\xi_{df} = \frac{|\Delta L_n| + |\Delta L_e|}{2}$$

$$\xi_{df} [\text{m}] = \frac{\lambda}{360 \text{ deg}} \xi_{df} [\text{deg}]$$

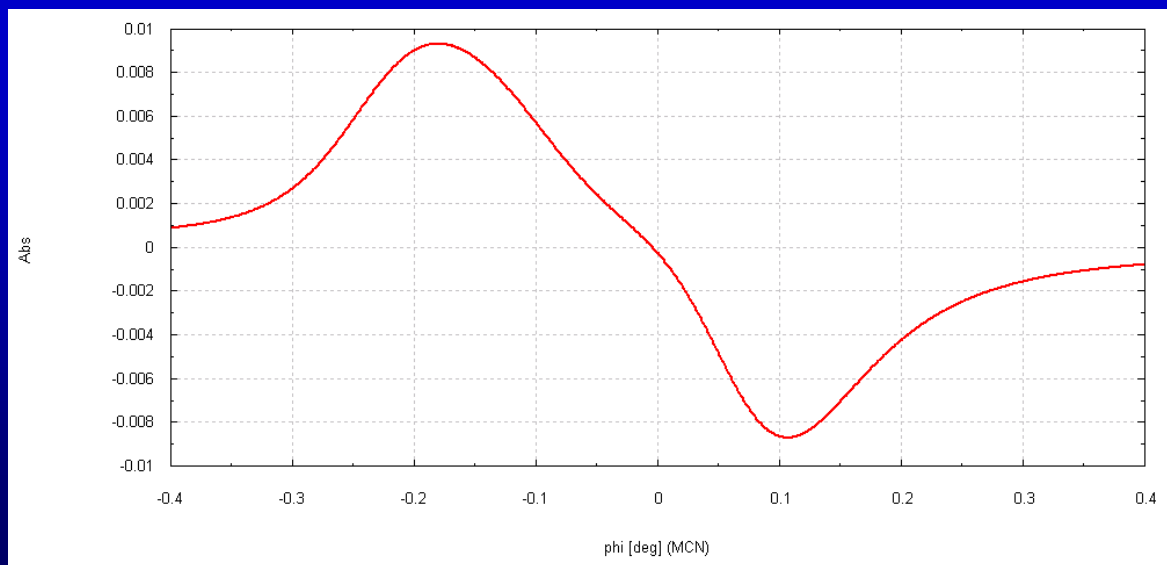
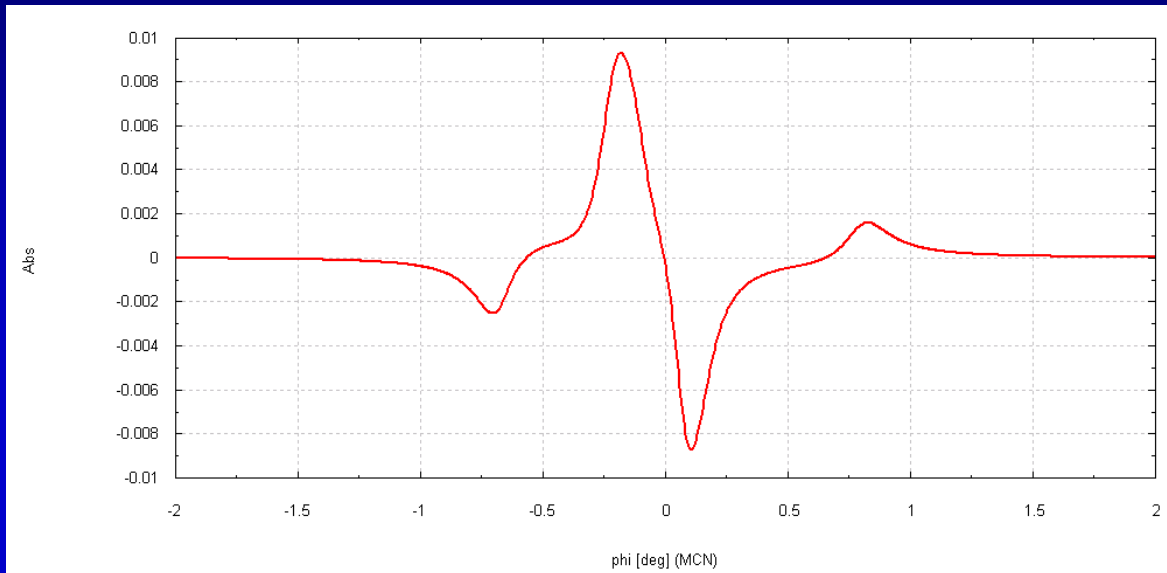


The MI long. errorsignal

Using an errorsignal derived from heterodyne readout, locking should be easy.

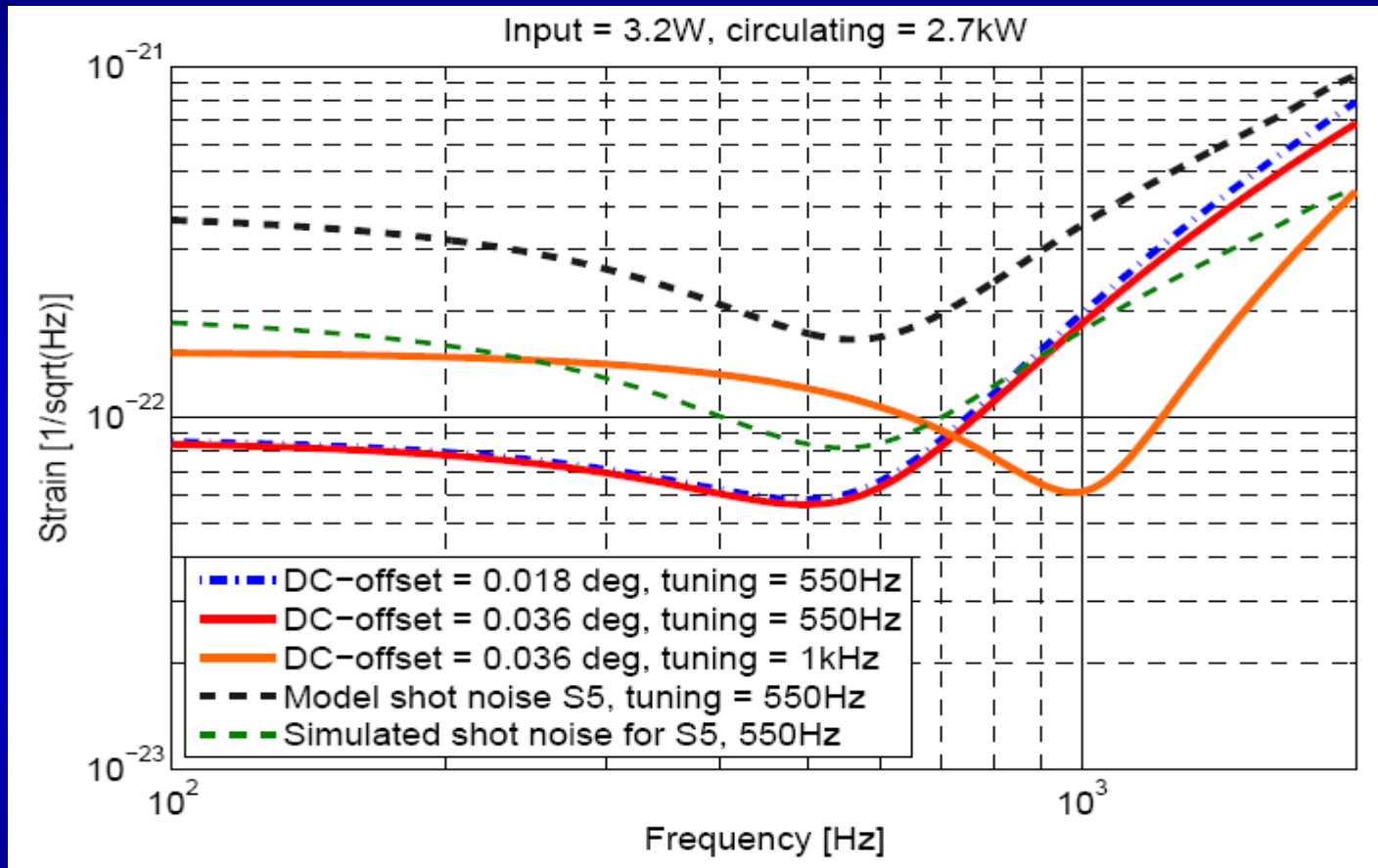
Proposed offset = 0.018 deg

Locking range 5 to 10 times larger.





Sensitivity for DC-readout



For this simulation the MI mod_index was reduced to 5% of nominal S5:

- A factor of reduction from decreasing the applied mod index.
- A factor of 10 from filtering at the output modecleaner



How to go on in terms of simulations

- Simulation of the Laser power noise coupling (compare 1 pm dark fringe offset to 50pm).
- Simulate light power present on the dark port diodes.
- Design of a proper output mode cleaner
- Simulate beam jitter requirements for OMC

Installation and commissioning of the output mode cleaner.

Checking sensitivity.

- If no reasonable sensitivity can be achieved stop DC-readout efforts !!
- If a reasonable sensitivity can be achieved go on:

- Simulate and find a locking signal for using only the homodyne signal.



E n d

Acquisition of Dual Recycling

