

8

7

6

5

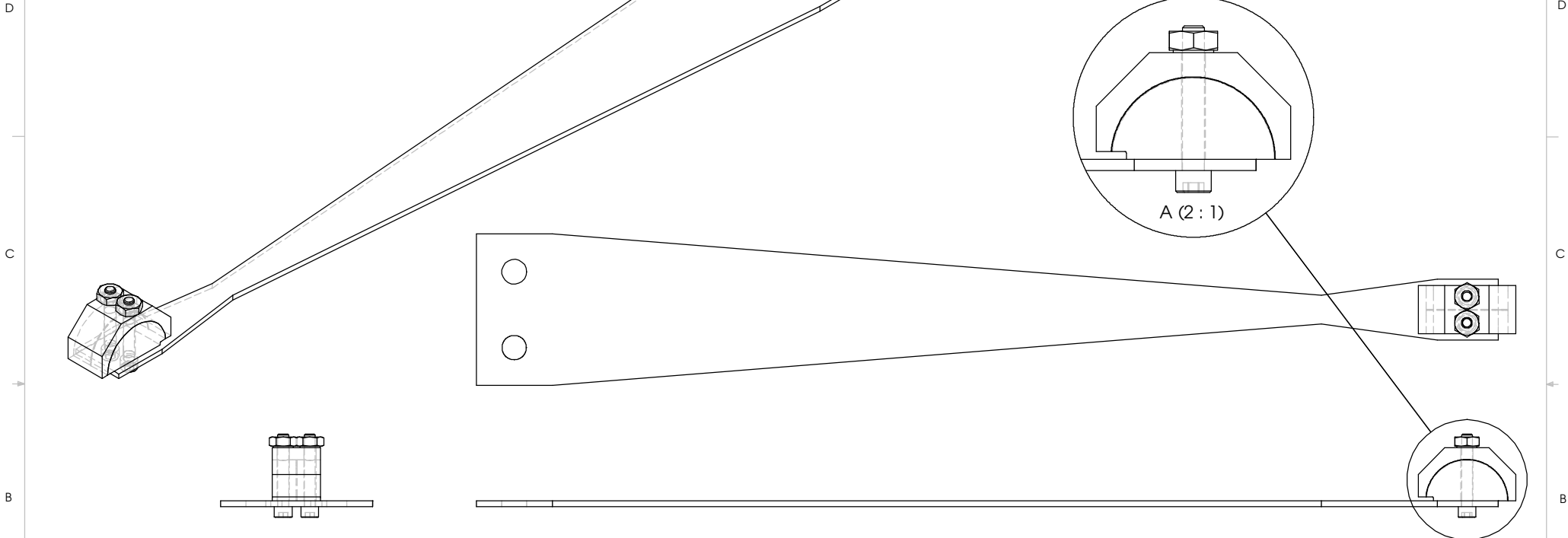
4

3

2

1

REV.	DATE	DCN#	DRAWING TREE



ITEM NO	REQ.	SPARE	TOT.	PART NUMBER	DESCRIPTION	MATERIAL
1	1	0	1	D030180	RAL Rounded BladeWireClamp Upperside	300 Series SST
2	1	0	1	D030181	RAL Rounded BladeWireClamp LowerSide	300 Series SST
3	1	0	1	D020205	upperblade flat	Maraging Steel C250
4	2	0	2		SST SOCKET HEAD CAP SCREW #4-40 UNC-3A X 0.75 LONG	
5	2	0	2		NAS 620 FLAT WASHER # 4 (.014" THICK)	
6	2	0	2		SST HEX NUT #4	

MANUFACTURING/ASSEMBLY NOTES

- REMOVE ALL SHARP EDGES R.02 MIN
- ALL MACHINING FLUIDS SHALL BE WATER SOLUBLE AND FREE OF SULPHUR, CHLORINE AND SILICONE.

MATERIAL
SEE ASSEMBLY BOM

FINISH: N/A

UNLESS OTHERWISE SPECIFIED:
DIMENSIONS ARE IN INCHES
GENERAL TOLERANCES:
.XX ±0.01
.XXX ±0.005
ANGULAR: ±0.5°

PARTS LIST

SYSTEM ADVANCED LIGO

SUB-SYSTEM SUS

NEXT ASSY MC: Upper Blade

PART NAME Assembly RAL Blade Wire Clamp with Blade

SCALE: NTS

DRAWN MPL
CHECKED RAJ

DATE 2/APR/03
9/APR/03

SIZE B

DWG. NO. D030179

REV 00

FILE NAME/LOCATION:

SHEET 1 OF 1

**SolidWorks Educational License
Instructional Use Only**

8

7

6

5

4

3

2

1

FILE NAME/LOCATION: